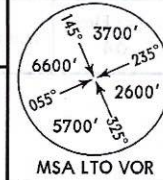


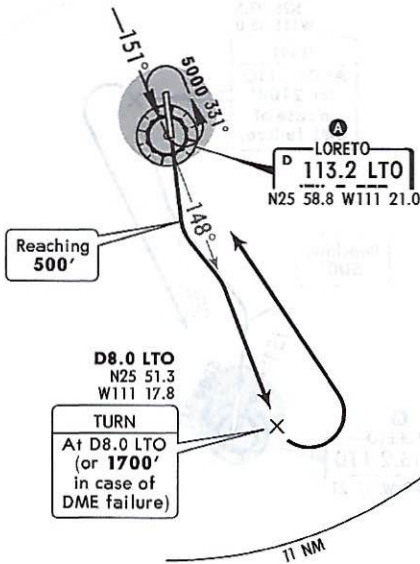
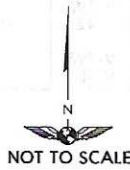
Apt Elev
34'

Trans level: FL195 Trans alt: 18500'



LORETO 3A (LTO3A) DEPARTURE
(RWY 16)

MINIMUM CROSSING ALTITUDE			
CEN	V-42	UJ-2	4000
SJD	V-4		4000
LAP	V-1E	UJ-1E	4000
LAP	V-1	UJ-9, J-1	4000
LAP	V-1W	UJ-20	4000
GRN	V-42	UJ-20, J-1	4000
MXL		UT-25	4000
GYM	V-393		4000
LMM	V-50		4000



This SID requires take-off minimums of:
Rwy 16 all aircraft Day and Night:
Ceiling 500', Visibility 1 SM (1600m).

Altitude at distance from LTO DME.

LTO DME	1	2	3	4	5	6	7	8
ALTITUDE	230'	430'	630'	830'	1030'	1230'	1430'	1630'

INITIAL CLIMB

Climb on runway heading until reaching 500' and proceed on LTO R-148 to D8.0 LTO (or 1700' in case of DME failure). Turn LEFT within 11 NM to LTO VOR and cross it according to the minimum crossing altitude A or ATC instructions.

CHANGES: MCA, initial climb.

© JEPPESEN, 2004, 2016. ALL RIGHTS RESERVED

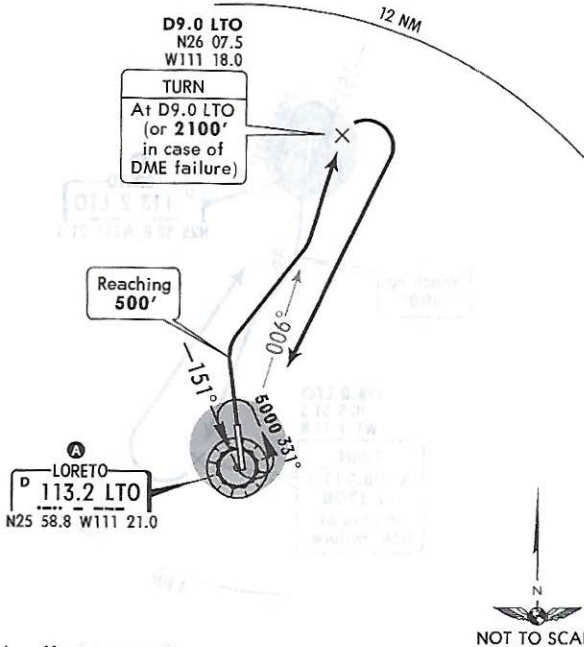
63-1097

Apt Elev 34'
Trans level: FL195 Trans alt: 18500'



LORETO 3B (LTO3B) DEPARTURE
(RWY 34)

A MINIMUM CROSSING ALTITUDE			
CEN	V-42	UJ-2	4000
SJD	V-4		4000
LAP	V-1E	UJ-1E	4000
LAP	V-1	UJ-9, J-1	4000
LAP	V-1W	UJ-20	4000
GRN	V-42	UJ-20, J-1	4000
MXL		UT-25	4000
GYM	V-393		4000
LMM	V-50		4000



This SID requires take-off minimums of:
Rwy 34 all aircraft
Day: Ceiling 500', Visibility 1 SM (1600m);
Night: Ceiling 700', Visibility 1 SM (1600m).
This SID requires a minimum climb gradient of 260' per NM to 6000'.

Gnd speed-KT	75	100	150	200	250	300
260' per NM	325	433	650	867	1083	1300

Altitude at distance from LTO DME.

LTO DME	1	2	3	4	5	6	7	8	9
ALTITUDE	-	270'	540'	800'	1060'	1320'	1580'	1840'	2100'

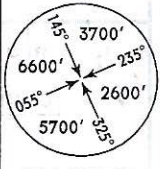
INITIAL CLIMB

Climb on runway heading until reaching 500', then turn RIGHT and proceed on LTO R-006 to D9.0 LTO (or 2100' in case of DME failure). Turn RIGHT within 12 NM to LTO VOR and cross it according to the minimum crossing altitude A or ATC instructions.

*LORETO Tower 118.4

BRIEFING STRIP™

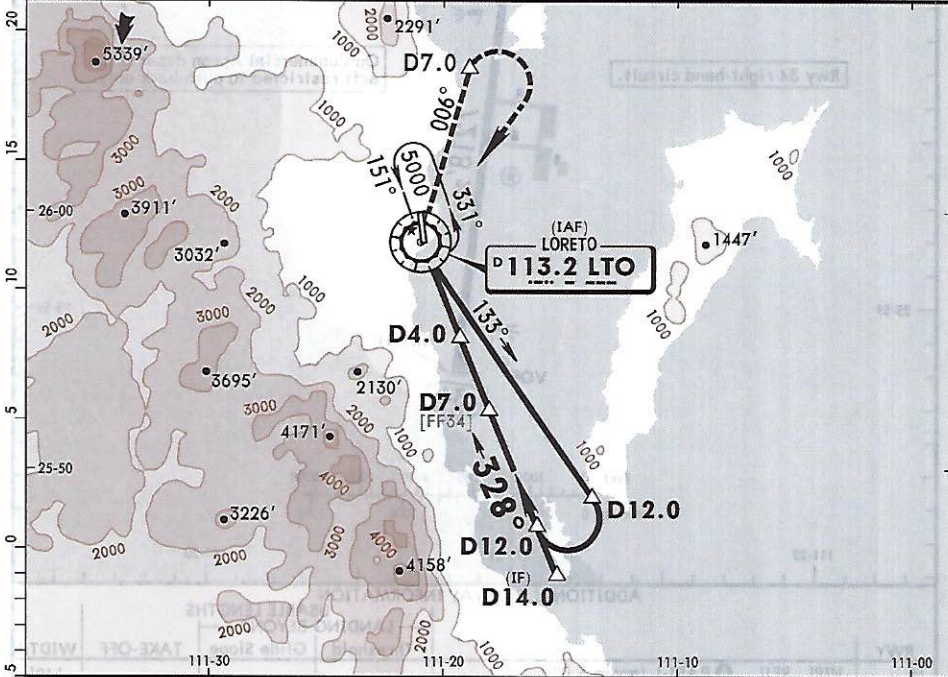
VOR LTO 113.2	Final Apc Crs 328°	Minimum Alt D7.0 2500'(2466')	MDA(H) 720' (686')	Apt Elev 34' Rwy 34'
-------------------------	---------------------------------	--	------------------------------	-------------------------



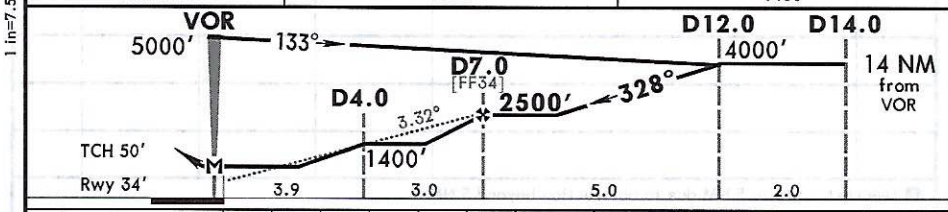
MISSED APCH: Climbing RIGHT turn to intercept and climb outbound on LTO VOR R-006 to D7.0, make a RIGHT turn within 10 NM to the minimum holding altitude.

MISSED APCH: Max Distance Outbound Track D7.0 LTO							
Gnd speed-Kts	80	100	120	140	160	180	200
Time	5:15	4:12	3:30	3:00	2:37	2:20	2:06

Alt Set: MB (IN on req) Apt Elev: 1 MB Trans Level: FL 195 Trans Alt: 18500'



LTO VOR	3.0	4.0
ALTITUDE	1050'	1400'



Gnd speed-Kts	70	90	100	120	140	160	
Descent Angle	3.32°	411	529	587	705	822	940
MAP at VOR	7.0	6:00	4:40	4:12	3:30	3:00	2:38

REIL PAPI-L	RT on 113.2 R-006	LTO D7.0
----------------	----------------------	-------------

STRAIGHT-IN LANDING RWY 34		CIRCLE-TO-LAND	
MDA(H) 720' (686')		Not Authorized West of Rwy 16-34	
A	1	Max Kts	MDA(H)
B	2	90	780' (746') - 1
C	2 1/4	120	780' (746') - 1 1/4
D	2 1/2	140	780' (746') - 2 1/4
		165	780' (746') - 2 1/2

CHANGES: VNAV depiction.

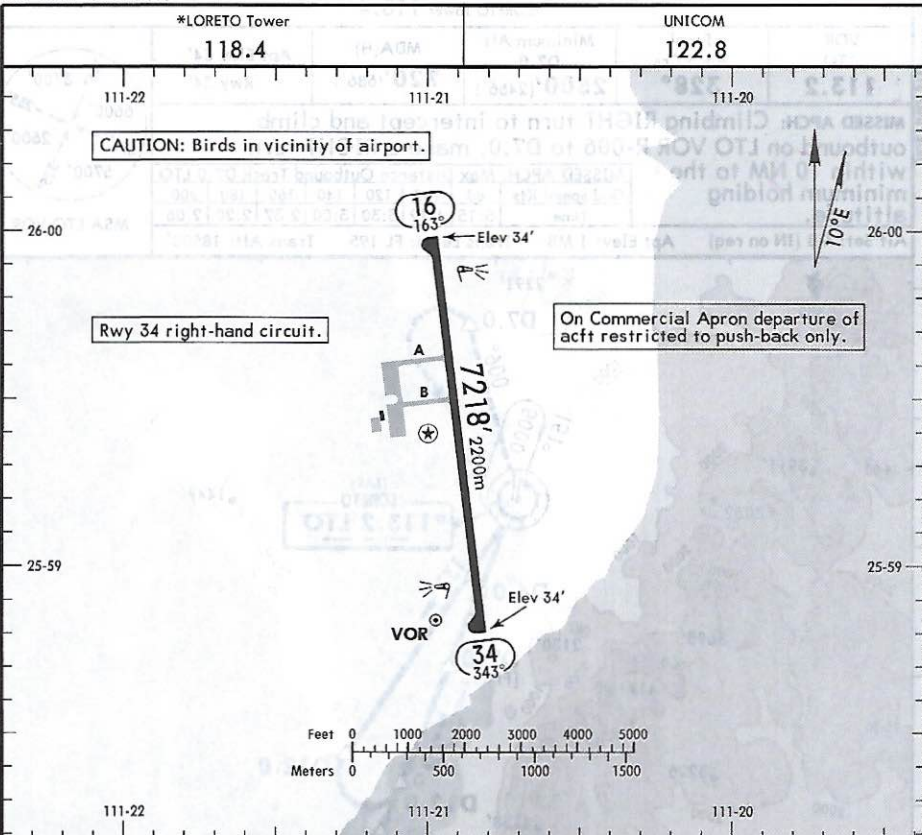
© JEPPESEN, 1999, 2015. ALL RIGHTS RESERVED.

6601-109

MMLT/LTO
 Apt Elev 34'
 N25 59.4 W111 20.8

JEPPESEN
 27 MAR 15 (13-1)

LORETO, MEXICO
 LORETO INTL



ADDITIONAL RUNWAY INFORMATION

RWY	HIRL REIL	PAPI-L (angle 3.0°)	USABLE LENGTHS		TAKE-OFF	WIDTH
			Threshold	Glide Slope		
16	HIRL REIL	PAPI-L (angle 3.0°)				148'
34	HIRL REIL	PAPI-L (angle 3.0°)				45m

① Use restricted to 5 NM due to obstruction beyond 5 NM.

	TAKE-OFF		FOR FILING AS ALTERNATE			
	Rwy 16	Rwy 34		DAY	NIGHT	
		DAY	NIGHT			
1 & 2 Eng	500-1	500-1	700-1	A	800-2½	NA
3 & 4 Eng						
				B		
				C		
				D		

CHANGES: None.

© JEPPESEN, 1999, 2015. ALL RIGHTS RESERVED.

MMLT/LTO
LORETO INTL

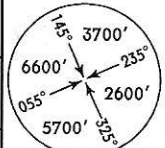
JEPPESEN
2 JAN 15 (13-2) Eff 8 Jan

LORETO, MEXICO
VOR-A

*LORETO Tower 118.4

BRIEFING STRIP™

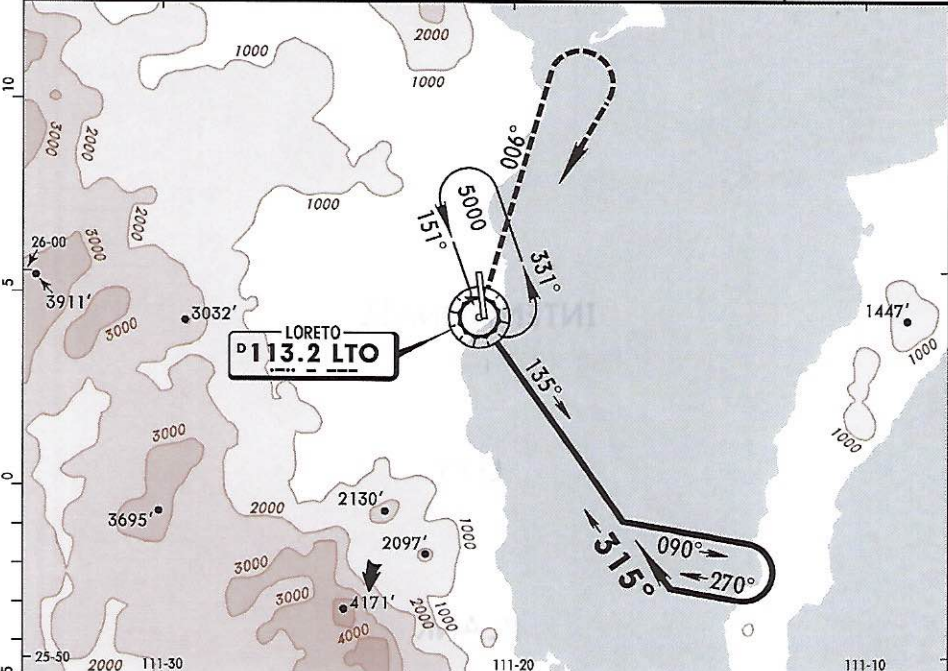
VOR LTO 113.2	Final Apch Crs 315°	No FAF	MDA(H) Refer to Minimums	Apt Elev 34'
----------------------------	----------------------------------	--------	--------------------------------	---------------------



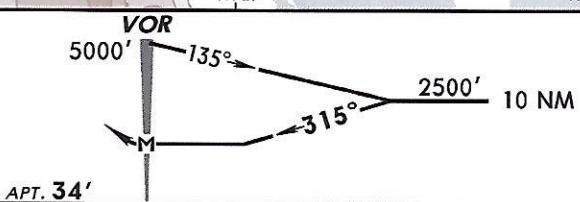
MISSED APCH: Climbing RIGHT turn to intercept and climb outbound on LTO VOR R-006, then turn RIGHT within 10 NM to the minimum holding altitude.

MAX TIME TO TURN							
Gnd Speed-Kts	80	100	120	140	160	180	200
7 NM to turn	5:15	4:12	3:30	3:00	2:38	2:20	2:06

Alt Set: MB (IN on req) Apt Elev: 1 MB Trans Level: FL 195 Trans alt: 18500'



1 in=5 NM



MAP at VOR	Lighting - Refer to Airport Chart	RT on LTO 113.2 R-006
------------	-----------------------------------	------------------------------

CIRCLE-TO-LAND
Not Authorized West of Rwy 16-34

Max Kts	MDA(H)
A 90	780' (746') - 1
B 120	780' (746') - 1 1/4
C 140	780' (746') - 2 1/4
D 165	780' (746') - 2 1/2

CHANGES: Procedure bearings.

© JEPPESEN, 1999, 2015. ALL RIGHTS RESERVED.

62-1101