

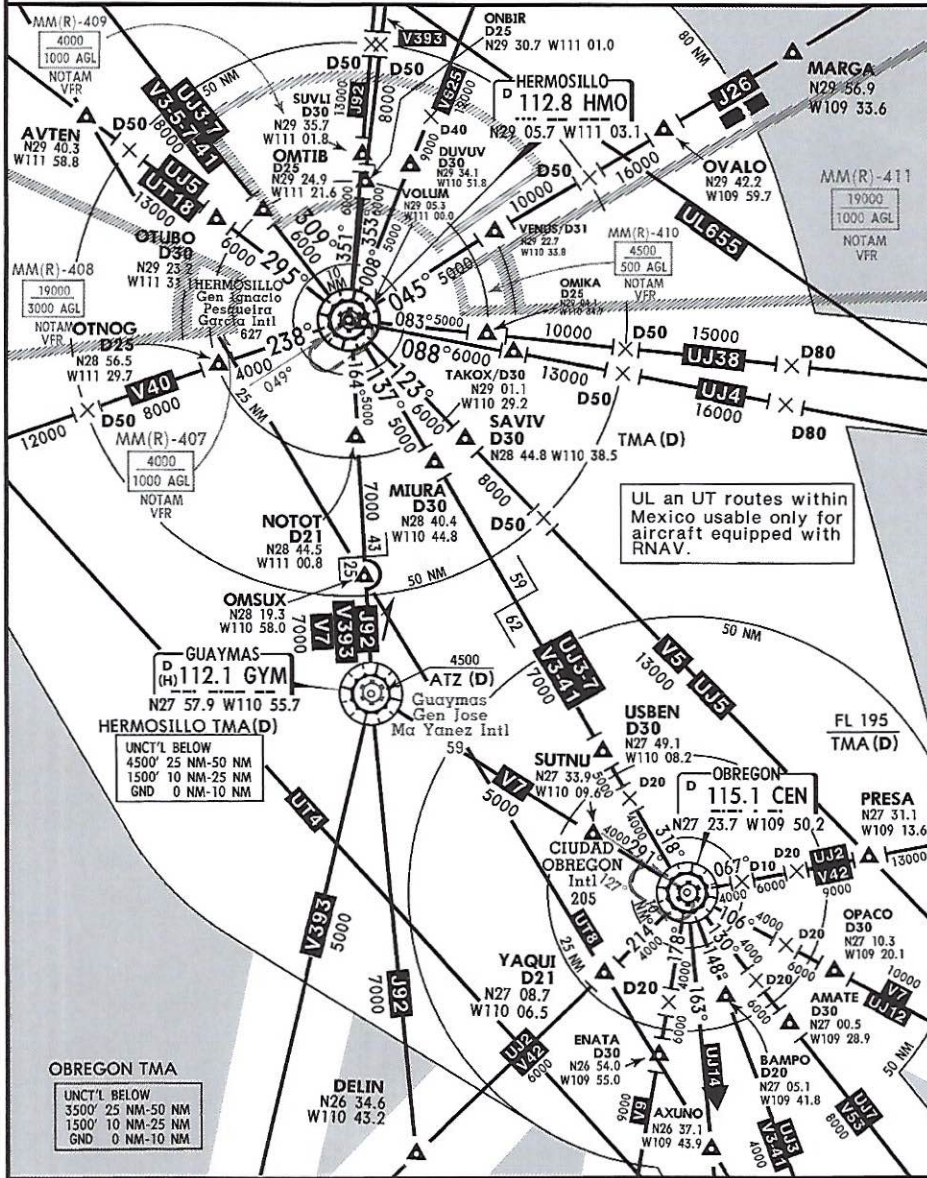
*ATIS
127.7

*HERMOSILLO Approach
121.4

SPEED RESTRICTIONS WITHIN MEXICO AIRSPACE

Maximum IAS unless otherwise depicted or authorized by ATC

- At or below 3000' AGL within 10NM of any airport.....200 KTS
 - At or below 10000' MSL within Mexico airspace.....250 KTS
 - At or below 10000' AGL within 30NM of any airport.....250 KTS
- WITHIN HERMOSILLO TMA**
- At or below 3600' MSL of Gen Ignacio Pesqueira Garcia Intl Apt and within 10NM of HMO VORDME.....200 KTS
 - At or below 10600' MSL within 30NM of HMO VORDME.....250 KTS
- WITHIN OBREGON TMA**
- At or below 3200' MSL of Obregon Intl and within 10NM of CEN VOR.....200 KTS
 - At or below 10200' MSL within 30NM of CEN VOR.....250 KTS



UL and UT routes within Mexico usable only for aircraft equipped with RNAV.

HERMOSILLO TMA(D)

UNCL'L BELOW
4500' 25 NM-50 NM
1500' 10 NM-25 NM
GND 0 NM-10 NM

OBREGON TMA

UNCL'L BELOW
3500' 25 NM-50 NM
1500' 10 NM-25 NM
GND 0 NM-10 NM

Changes: ATS system.

© JEPPESSEN, 1999, 2016. ALL RIGHTS RESERVED.

70-10411

MMHO/HMO

8 FEB 08
Eff 14 Feb

JEPPESEN HERMOSILLO, MEXICO

GEN IGNACIO PESQUEIRA GARCIA INTL (10-1R)

RADAR MINIMUM ALTITUDES

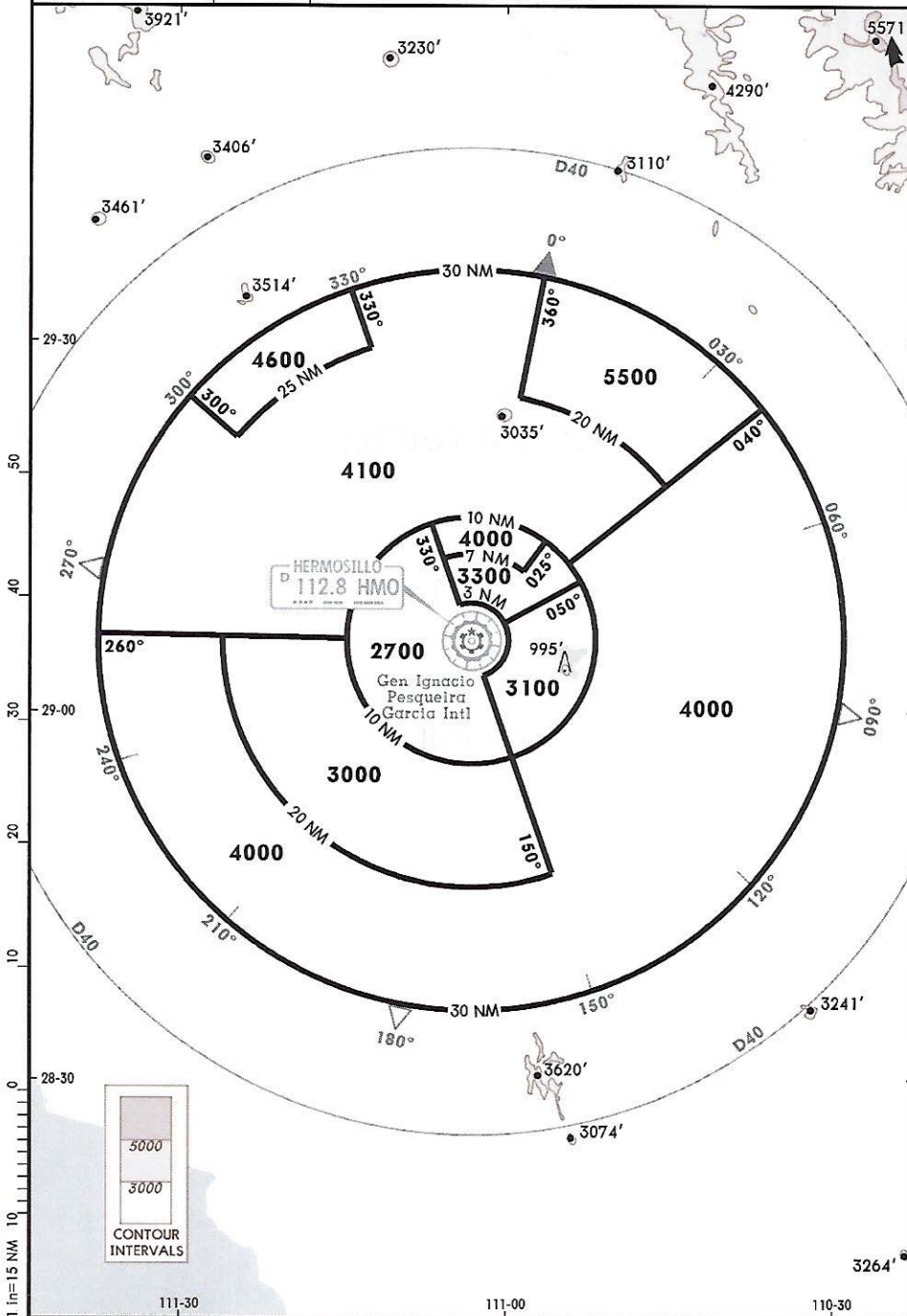
*HERMOSILLO Approach

Apt Elev

Alt Set: MB (IN on Req) Trans level: FL 195 Trans alt: 18500'
1. These are the lowest MVAs that can be assigned by the controller in a section when Radar control procedures (vectors) are applied, without affecting routes and procedures with lower minimums. 2. All aircraft operating under VFR within this TMA should have transponder mode 3 A/C with 4096 code capabilities.

121.4

627'



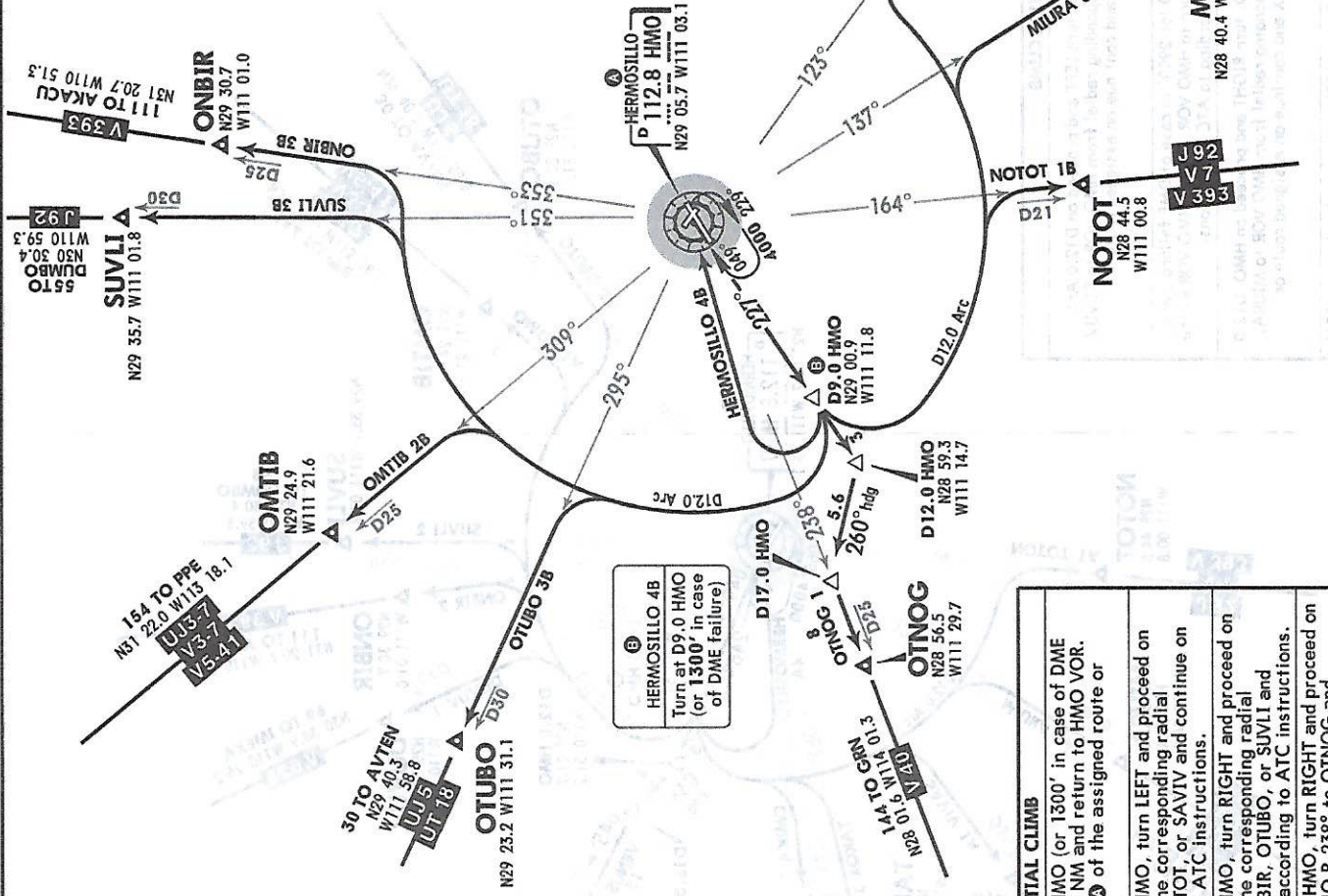
70-1043

1 in=15 NM
CHANGES: Chart revised.

© JEPPESEN, 2007, 2008. ALL RIGHTS RESERVED.

Apt Elev 627' Trans alt: 18500'

HERMOSILLO 4B (HMO4B) [HMO4B]
 MIURA 3B (MIURA3B) [MIUR3B]
 NOTOT 1B (NOTOT1B) [NOTO1B]
 OMTIB 2B (OMTIB2B) [OMTI2B]
 ONBIR 3B (ONBIR3B) [ONBI3B]
 OTNOG 1 (OTNOG1) [OTNOG1]
 OTUBO 3B (OTUBO3B) [OTUB3B]
 SAVIV 1B (SAVIV1B) [SAVI1B]
 SUVLI 3B (SUVLI3B) [SUVL3B]
 (RWY 23)



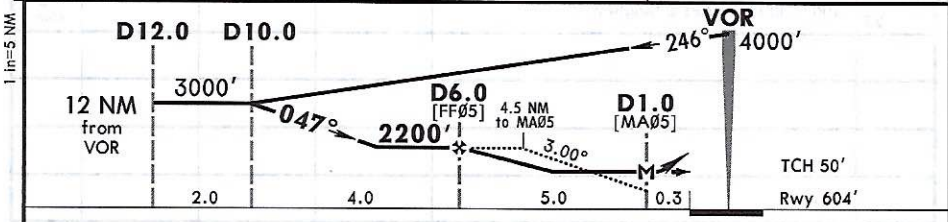
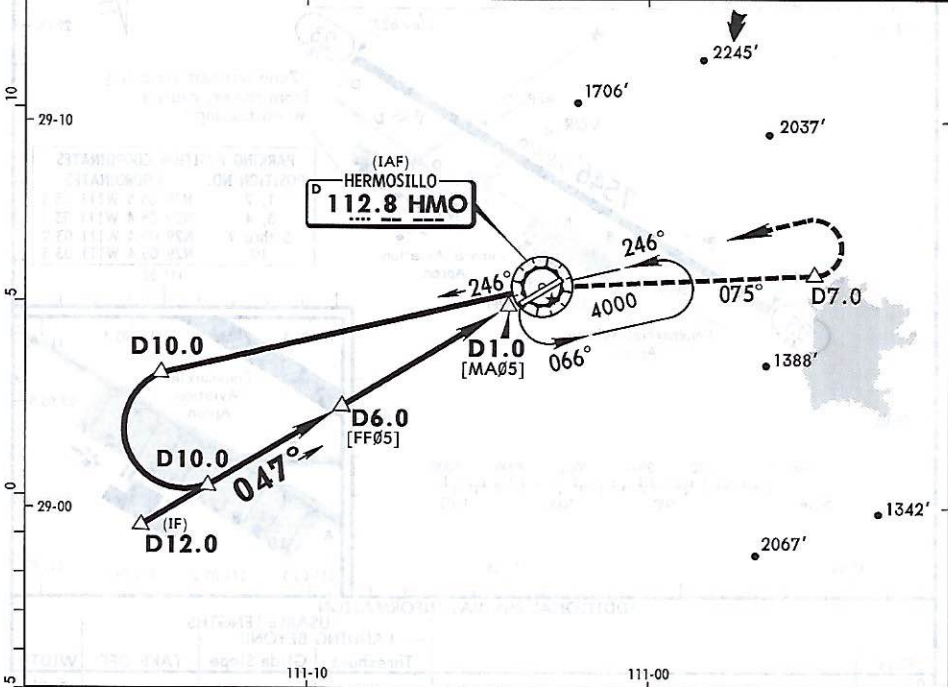
NOT TO SCALE

| MINIMUM CROSSING ALTITUDE | MINIMUM CROSSING ALTITUDE |
|---------------------------|---------------------------|
| CJS | 4000 |
| CUJ | 4000 |
| DEL | 4000 |
| CHX | 4000 |
| CEN | 3500 |
| GYM | 4000 |
| GRN | 4000 |
| TIJ | 3000 |
| PPE | 3000 |
| TUS | 3500 |
| OLS | 3500 |
| OLS | 4000 |

| SID | INITIAL CLIMB |
|--|--|
| HERMOSILLO 4B | Climb on HMO R-227 to D9.0 HMO (or 1300' in case of DME failure), turn RIGHT within 12 NM and return to HMO VOR. Depart HMO VOR at the MCA of the assigned route or according to ATC instructions. |
| MIURA 3B NOTOT 1B SAVIV 1B | Climb on HMO R-227 to D9.0 HMO, turn LEFT and proceed on D12.0 Arc until intercepting the corresponding radial from HMO VOR to MIURA, NOTOT, or SAVIV and continue on assigned route or according to ATC instructions. |
| OMTIB 2B ONBIR 3B OTUBO 3B SUVLI 3B | Climb on HMO R-227 to D9.0 HMO, turn RIGHT and proceed on D12.0 Arc until intercepting the corresponding radial from HMO VOR to OMTIB, ONBIR, OTUBO, or SUVLI and continue on assigned route or according to ATC instructions. |
| OTNOG 1 | Climb on HMO R-227 to D12.0 HMO, turn RIGHT and proceed on heading 260° and intercept HMO R-238° to OTNOG and continue on assigned route or according to ATC instructions. |

MMHO/HMO **JEPPESEN** HERMOSILLO, MEXICO
 GEN IGNACIO PESQUEIRA GARCIA INTL (13-1) 9 SEP 16 Eff 15 Sep VOR DME-1 Rwy 05

| | | | | | |
|--|-------------------------------|--|------------------------------|----------------------------|-------------|
| *ATIS 127.7 | | *HERMOSILLO Approach 121.4 | | *HERMOSILLO Tower 118.7 | |
| VOR HMO 112.8 | Final Apch Crs 047° | Minimum Alt D6.0 2200'(1596') | MDA(H) 1100'(496') | Apt Elev 627' | Rwy 604' |
| MISSED APCH: Climb outbound on HMO VOR R-075 to D7.0, turn LEFT within 10 NM to HMO VOR to the minimum holding altitude. | | | | | |
| Alt Set: MB (IN on req) | | Rwy Elev: 22 MB | Trans level: FL195 | Trans alt: 18500' | MSA HMO VOR |



| | | | | | | | | | |
|---------------|-------|-----|-----|-----|-----|-----|-----|--------|---------------|
| Gnd speed-Kts | 70 | 90 | 100 | 120 | 140 | 160 | | | |
| Descent angle | 3.00° | 372 | 478 | 531 | 637 | 743 | 849 | REIL | HMO |
| MAP at D1.0 | | | | | | | | PAPI-L | on 112.8 D7.0 |
| | | | | | | | | | R-075 |

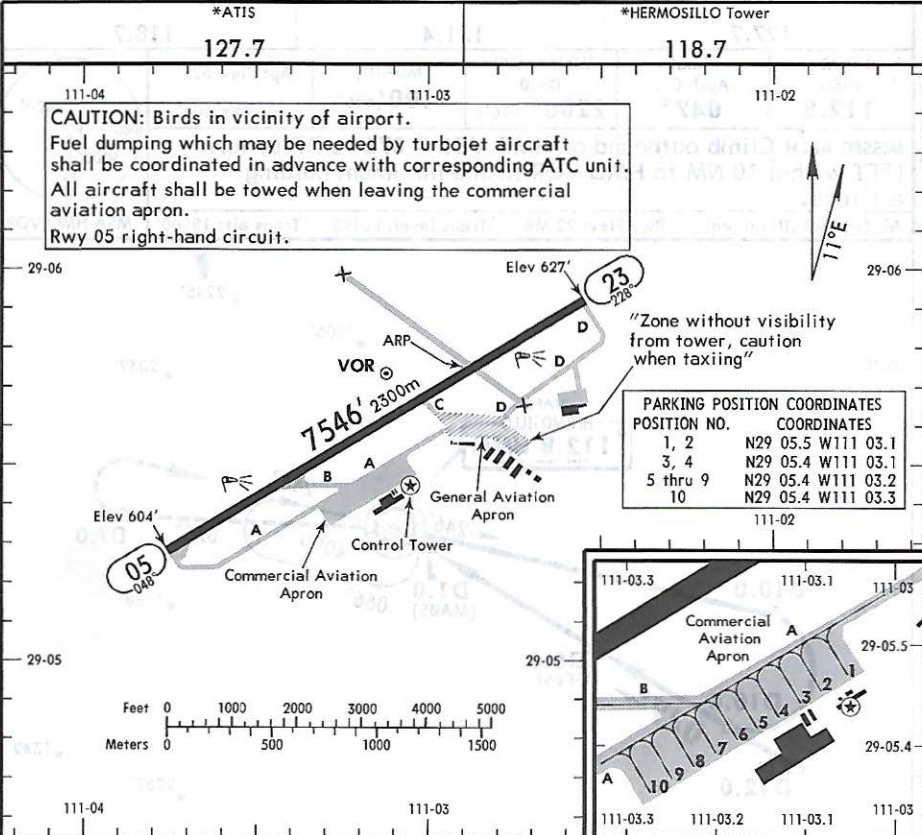
| | | | |
|----------------------------|-----|----------------|--------------------|
| STRAIGHT-IN LANDING RWY 05 | | CIRCLE-TO-LAND | |
| MDA(H) 1100'(496') | | MDA(H) | |
| A | | Max Kts | |
| B | 1 | 90 | 1160'(533') -1 |
| C | 1/4 | 140 | 1320'(693') -2 |
| D | 1/2 | 165 | 1320'(693') -2 1/4 |

CHANGES: Minimums, PAPI, Rwy end elevation. © JEPPESEN, 1999, 2016. ALL RIGHTS RESERVED.

MMHO/HMO
 Apt Elev 627'
 N29 05.7 W111 02.9

JEPPESEN
 9 SEP 16
 Eff 15 Sep (13-1)

HERMOSILLO, MEXICO
 GEN IGNACIO PESQUEIRA GARCIA INTL



ADDITIONAL RUNWAY INFORMATION

| RWY | USABLE LENGTHS LANDING BEYOND | TAKE-OFF | WIDTH |
|----------|----------------------------------|----------|-------------|
| | | | |
| 05 23 | HIRL REIL PAPI-L (angle 3.0°) | | 148' 45m |
| | | | |
| | | | |
| | | | |

TAKE-OFF & DEPARTURE PROCEDURE

FOR FILING AS ALTERNATE

| All Rwy's | | |
|-----------|-------|---|
| 1 & 2 Eng | 700-1 | A |
| 3 & 4 Eng | | B |
| | | C |
| | | D |

DEPARTURE PROCEDURE: For departures and MCA's see Hermosillo 10-3 and 10-3A.

MMHO/HMO
GEN IGNACIO PESQUEIRA GARCIA INTL

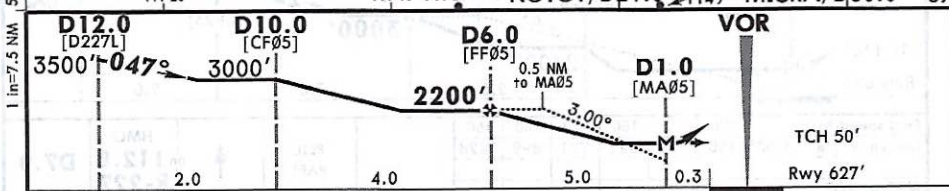
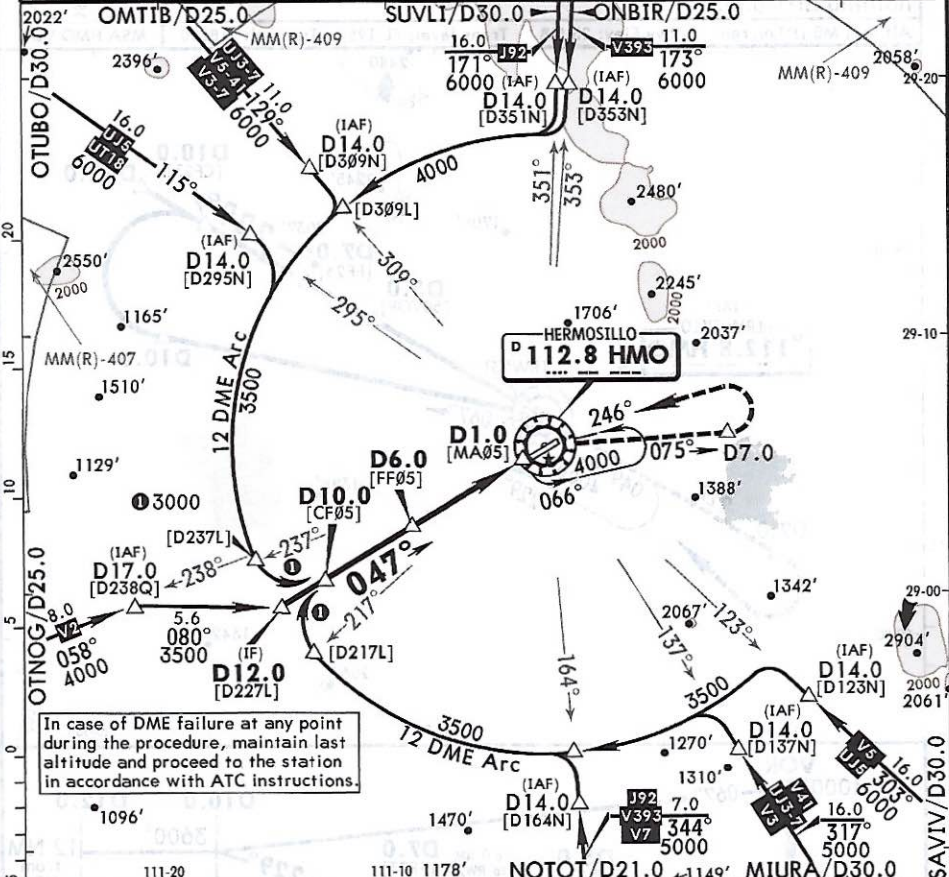
JEPPESEN
22 APR 16
13-2
Eff 28 Apr

HERMOSILLO, MEXICO
VOR DME 2 Rwy 05

| | | | | | |
|---------------------|---------------------------|-------------------------------------|-----------------------|----------------------------|--|
| *ATIS 127.7 | | *HERMOSILLO Approach 121.4 | | *HERMOSILLO Tower 118.7 | |
| VOR HMO 112.8 | Final Apch Crs 047° | Minimum Alt D6.0 2200'(1573') | MDA(H) 1100'(473') | Apt Elev 627' Rwy 627' | |

MISSED APCH: Climb outbound on HMO VOR R-075 to D7.0, turn LEFT within 10 NM. Return to HMO VOR at the minimum holding altitude.

Alt Set: MB (IN on req) Rwy Elev: 23 MB Trans level: FL 195 Trans alt: 18500' MSA HMO VOR



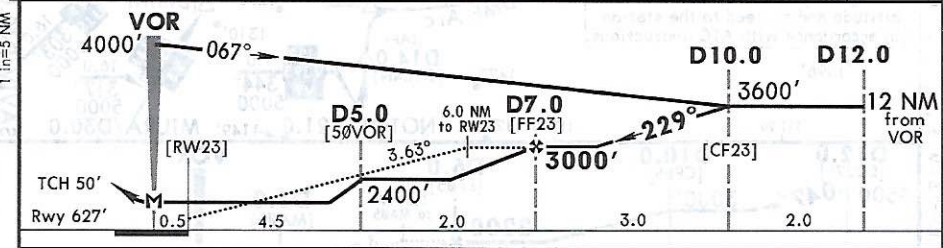
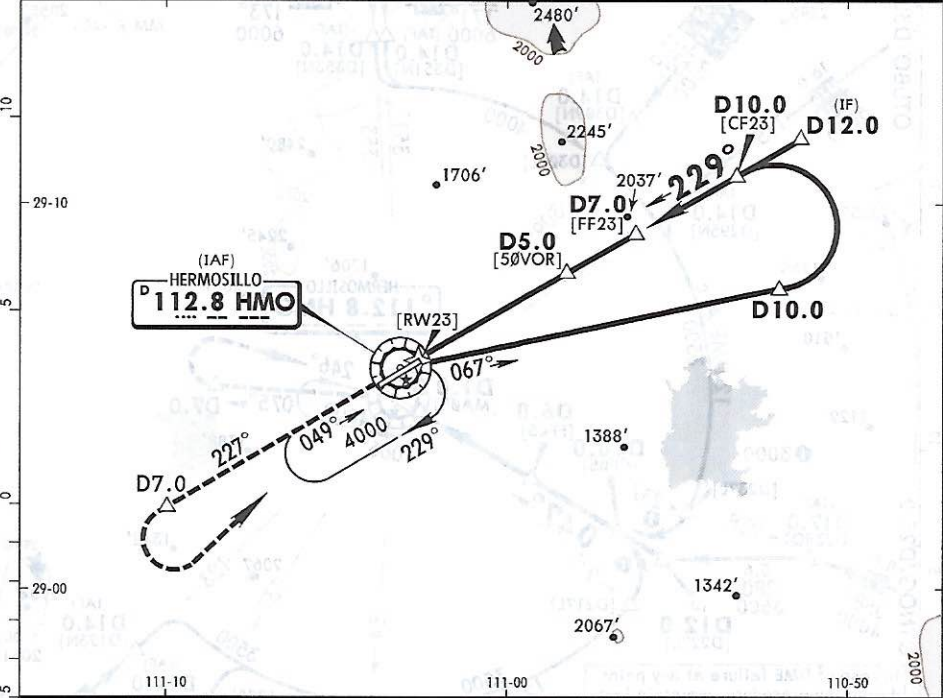
| | | | | | | | | | | |
|--|-------|-----|-----|-----|-----|-----|--------------|----------------------------------|--------------------|--|
| Gnd speed-Kts | 70 | 90 | 100 | 120 | 140 | 160 | REIL PAPI | HMO on 112.8 R-075 D7.0 | | |
| Descent angle | 3.00° | 372 | 478 | 531 | 637 | 743 | | | 849 | |
| MAP at D1.0 | | | | | | | | | | |
| STRAIGHT-IN LANDING RWY 05 MDA(H) 1100'(473') | | | | | | | Max Kts | CIRCLE-TO-LAND MDA(H) | | |
| A | 1 | | | | | | | 90 | 1160'(533') -1 | |
| B | 1/4 | | | | | | | 120 | 1320'(693') -2 | |
| C | 1/2 | | | | | | | 140 | 1320'(693') -2 1/4 | |

CHANGES: Waypoint names, database identifiers.

© JEPPESEN, 1999, 2016. ALL RIGHTS RESERVED.

MMHO/HMO GEN IGNACIO PESQUEIRA GARCIA INTL (13-3) 22 APR 16 Eff 28 Apr HERMOSILLO, MEXICO VOR DME 1 Rwy 23

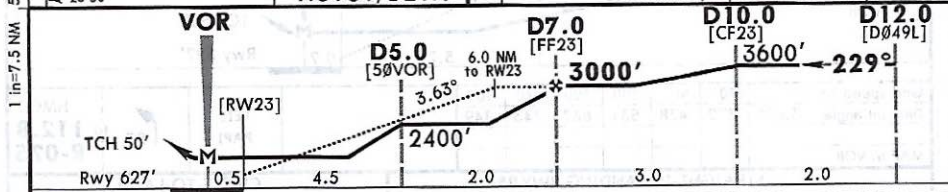
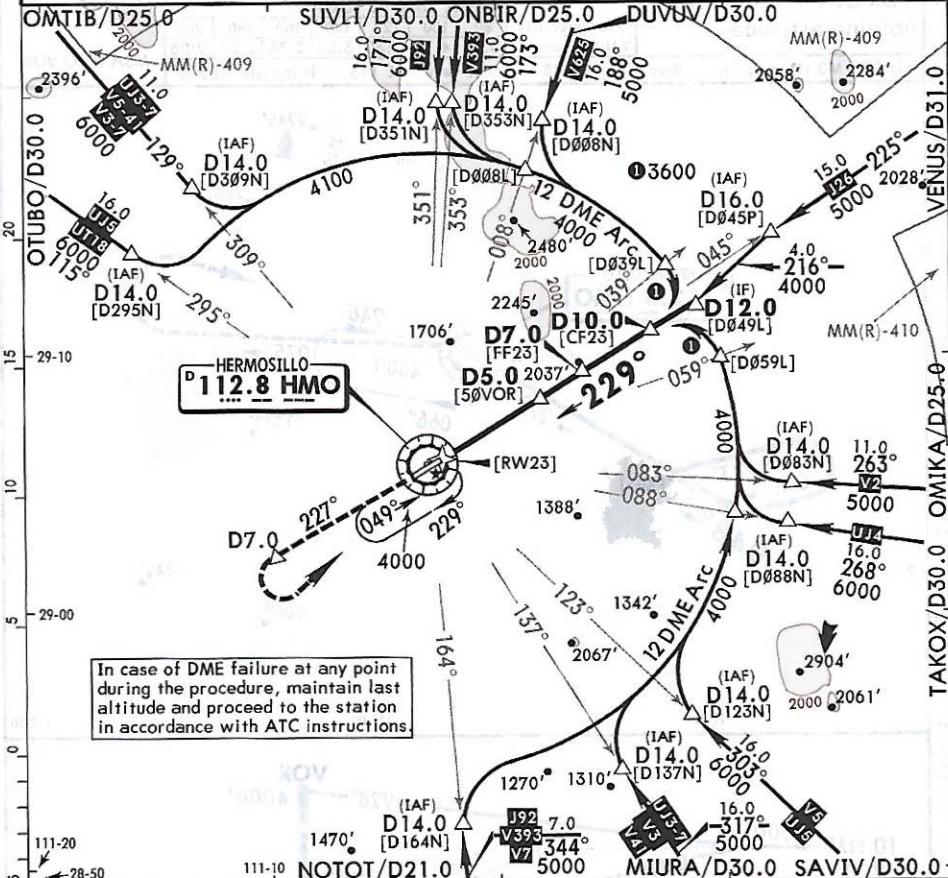
| | | | | | |
|--|------------------------|--------------------------------------|------------------------|---------------------------|----------------------------|
| *ATIS 127.7 | | *HERMOSILLO Approach 121.4 | | | *HERMOSILLO Tower 118.7 |
| VOR HMO 112.8 | Final Apch Crs 229° | Minimum Alt D7.0 3000' (2373') | MDA(H) 1120' (493') | Apt Elev 627' Rwy 627' | |
| MISSED APCH: Climb outbound on HMO VOR R-227 to D7.0, turn LEFT within 10 NM. Return to HMO VOR at the minimum holding altitude. | | | | | |
| Alt Set: MB (IN on req) Rwy Elev: 23 MB Trans level: FL 195 Trans alt: 18500' | | | | | MSA HMO VOR |



| | | | | | | | | | | |
|----------------------------|-------|-----|-----|-----|---------------------|-----|------|------|----------|--|
| Gnd speed-Kts | 70 | 90 | 100 | 120 | 140 | 160 | | | | |
| Descent Angle | 3.63° | 450 | 578 | 642 | 771 | 899 | 1028 | REIL | HMO | |
| MAP at VOR | | | | | | | | PAPI | on 112.8 | |
| STRAIGHT-IN LANDING RWY 23 | | | | | CIRCLE-TO-LAND | | | | | |
| MDA(H) 1120' (493') | | | | | MDA(H) | | | | | |
| A | 1 | | | | | 90 | | | | |
| B | 1 1/4 | | | | | 120 | | | | |
| C | 1 1/2 | | | | | 140 | | | | |
| D | 1 3/4 | | | | | 165 | | | | |
| | | | | | 1160' (533') -1 | | | | | |
| | | | | | 1320' (693') -2 | | | | | |
| | | | | | 1320' (693') -2 1/4 | | | | | |

CHANGES: Database identifiers. © JEPPESEN, 1999, 2016. ALL RIGHTS RESERVED.

| | | | | | |
|--|---------------------------|--------------------------------------|------------------------|----------------------------|-------------|
| *ATIS 127.7 | | *HERMOSILLO Approach 121.4 | | *HERMOSILLO Tower 118.7 | |
| VOR HMO 112.8 | Final Apch Crs 229° | Minimum Alt D6.0 3000' (2373') | MDA(H) 1120' (493') | Apt Elev 627' | Rwy 627' |
| MISSED APCH: Climb outbound on HMO VOR R-227 to D7.0, make a LEFT teardrop turn within 10 NM to HMO VOR to the minimum holding altitude. | | | | | |
| Alt Set: MB (IN on req) | | Rwy Elev: 23 MB | Trans level: FL 195 | Trans alt: 18500' | MSA HMO VOR |



| | | | | | | | | | |
|---|-------|-----|-----|-----|-----|----------------|---------------------|---------------------------------------|------|
| Gnd speed-Kts | 70 | 90 | 100 | 120 | 140 | 160 | REIL PAPI | ↑ HMO on 112.8 R-227 D7.0 | |
| Descent Angle | 3.63° | 450 | 578 | 642 | 771 | 899 | | | 1028 |
| MAP at VOR | | | | | | | | | |
| STRAIGHT-IN LANDING RWY 23 MDA(H) 1120' (493') | | | | | | CIRCLE-TO-LAND | | | |
| A | 1 | | | | | Max Kts | 90 | | |
| B | 1 | | | | | 120 | 1160' (533') -1 | | |
| C | 1/4 | | | | | 140 | 1320' (693') -2 | | |
| D | 1/2 | | | | | 165 | 1320' (693') -2 1/4 | | |

CHANGES: None.

MMHO/HMO

GEN IGNACIO PESQUEIRA GARCIA INTL

JEPPESSEN

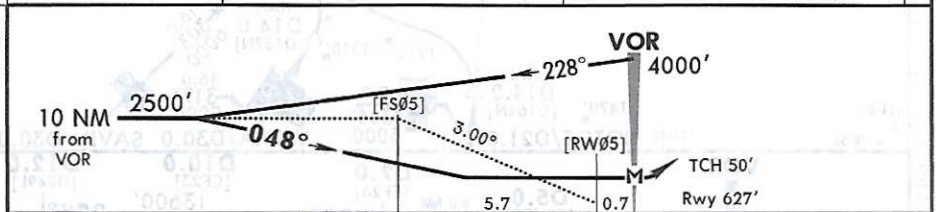
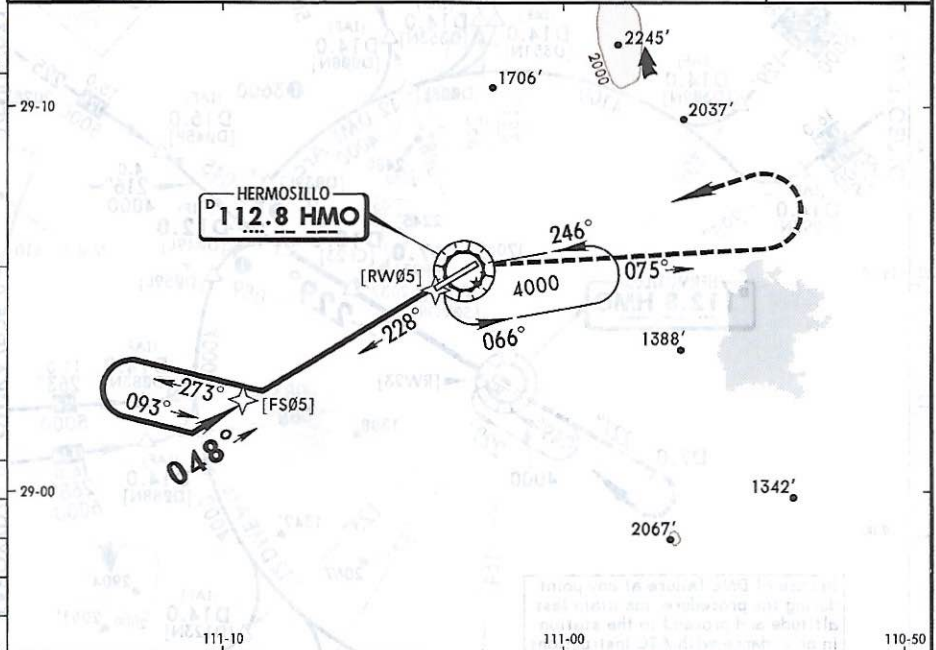
13-5

29 JUL 16

HERMOSILLO, MEXICO

VOR Rwy 05

| *ATIS 127.7 | | *HERMOSILLO Approach 121.4 | | *HERMOSILLO Tower 118.7 | | | | | | | | | | | | | | | | | | | | | | | | |
|---|-------------------------------|-------------------------------|------------------------------|----------------------------|------|------------------|------|--|--|--|--|--|---------------|----|-----|-----|-----|-----|-----|-----|--------------|------|------|------|------|------|------|------|
| VOR HMO 112.8 | Final Apch Crs 048° | No FAF | MDA(H) 1160'(533') | Apt Elev 627' Rwy 627' | | | | | | | | | | | | | | | | | | | | | | | | |
| <p>MISSED APCH: Turn RIGHT and climb to intercept HMO VOR R-075 outbound, make a LEFT teardrop turn within 10 NM to HMO VOR at the minimum holding altitude.</p> <table border="1"> <tr> <th colspan="7">MAX TIME TO TURN</th> </tr> <tr> <td>Gnd Speed-Kts</td> <td>80</td> <td>100</td> <td>120</td> <td>140</td> <td>160</td> <td>180</td> <td>200</td> </tr> <tr> <td>7 NM to turn</td> <td>5:15</td> <td>4:12</td> <td>3:30</td> <td>3:00</td> <td>2:38</td> <td>2:20</td> <td>2:06</td> </tr> </table> | | | | | | MAX TIME TO TURN | | | | | | | Gnd Speed-Kts | 80 | 100 | 120 | 140 | 160 | 180 | 200 | 7 NM to turn | 5:15 | 4:12 | 3:30 | 3:00 | 2:38 | 2:20 | 2:06 |
| MAX TIME TO TURN | | | | | | | | | | | | | | | | | | | | | | | | | | | | |
| Gnd Speed-Kts | 80 | 100 | 120 | 140 | 160 | 180 | 200 | | | | | | | | | | | | | | | | | | | | | |
| 7 NM to turn | 5:15 | 4:12 | 3:30 | 3:00 | 2:38 | 2:20 | 2:06 | | | | | | | | | | | | | | | | | | | | | |
| Alt Set: MB (IN on req) | | Rwy Elev: 23 MB | Trans level: FL 195 | Trans alt: 18500' | | | | | | | | | | | | | | | | | | | | | | | | |



| | | | | | | | | | |
|----------------------------|-------|-----|-----|-----|----------------|--------------------|--------------|--|--|
| Gnd speed-Kts | 70 | 90 | 100 | 120 | 140 | 160 | REIL PAPI | | HMO to 112.8 R-075 |
| Descent angle 3.00° | 372 | 478 | 531 | 637 | 743 | 849 | | | |
| MAP at VOR | | | | | | | | | |
| STRAIGHT-IN LANDING RWY 05 | | | | | CIRCLE-TO-LAND | | | | |
| MDA(H) 1160'(533') | | | | | MDA(H) | | | | |
| A | 1 | | | | Max Kts 90 | 1160'(533') -1 | | | |
| B | 1 1/2 | | | | 120 | 1320'(693') -2 | | | |
| C | 1 3/4 | | | | 140 | 1320'(693') -2 1/4 | | | |
| D | 1 3/4 | | | | 165 | 1320'(693') -2 1/4 | | | |

CHANGES: Re-issue for vnav angle.

© JEPPESEN, 1999, 2016. ALL RIGHTS RESERVED.